



# GAT MONTHLY MEMBERSHIP PROGRESS REPORT

Results as of: 5/31/2024

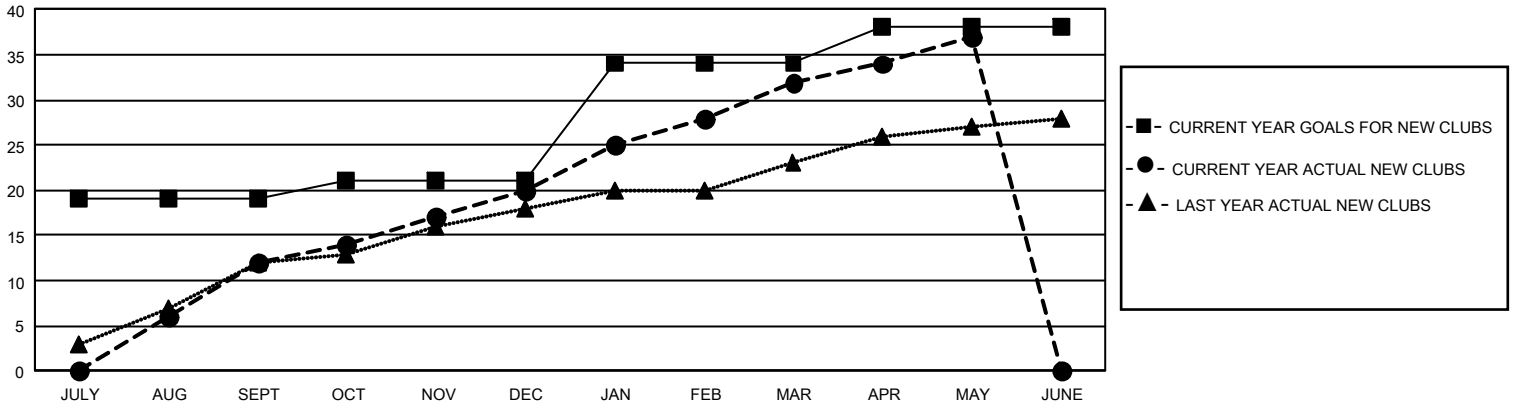
## GMT Constitutional Area 5 - K, Group K

REPORT DOES NOT INCLUDE CLUBS IN UNDISTRICTED AREAS.

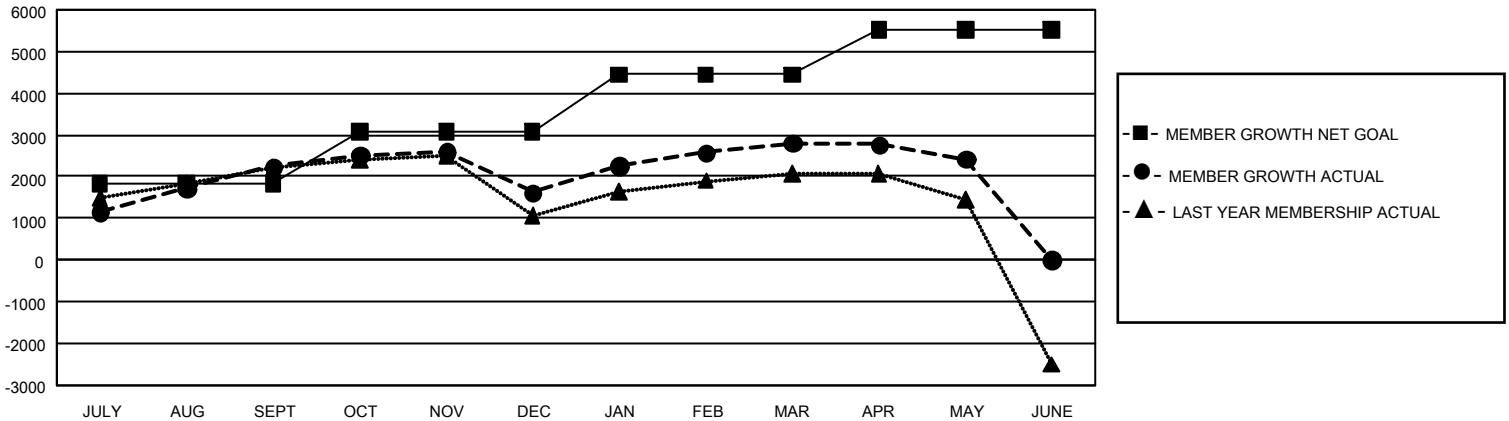
Clubs			
RESULTS FOR 2023-2024			
QUARTER	NEW CLUB GOAL	NEW CLUBS	DROPPED CLUBS
JULY/AUG/SEPT	57	12	9
OCT/NOV/DEC	6	8	14
JAN/FEB/MAR	39	12	2
APR/MAY/JUNE	12	5	5

Members			
RESULTS FOR 2023-2024			
QUARTER	MEMBER GROWTH NET GOAL	MEMBER GROWTH ACTUAL	DROPPED MEMBERS ACTUAL (including transfers)
JULY/AUG/SEPT	1828	4,741	2,248
OCT/NOV/DEC	1256	2,235	2,739
JAN/FEB/MAR	1363	2,570	1,251
APR/MAY/JUNE	1085	981	1,271

GOALS AND ACTUAL NEW CLUBS CUMULATIVE



GOALS AND ACTUAL MEMBERS CUMULATIVE



DROPPED CLUBS: 28	1,645 CLUBS OF 2,048 ADDED 1 OR MORE NEW MEMBERS	<u>GENDER DISTRIBUTION</u>	
		MALE	53,543 (73.51%)
<u>DROPPED MEMBERS</u>		FEMALE	19,287 (26.48%)
		NON BINARY	0 (0.00%)
DECEASED	223	PREFER NOT TO ANSWER	7 (0.01%)
CLUB CANCELLED	221	TOTAL FAMILY UNIT MEMBERS	4,003
OTHER	7,039	FAMILY MEMBERS PAYING HALF DUES	2,311
TOTAL	7,483	<a href="#">CLICK HERE FOR CUMULATIVE MEMBERSHIP DATA</a>	